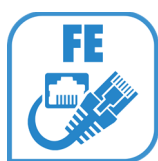




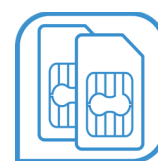
Lipari 5200



Fast Ethernet



LTE



Dual SIM

Datasheet

Lipari 5200



Dual SIM LTE router

Lipari 5200 provides LTE connectivity, with the appropriate level of security, to the user who is accessing the public or private data network (Internet/Intranet)

The 5200 router has two SIM slots to support failover and backup configurations. The use of the operator with the best network coverage, depending on the location of the installation, also increases the reliability of the end-to-end solution.

APPLICATION SCENARIOS

Lipari 5200 is particularly suited for business critical applications in the following scenarios:

- Sales points
- Temporary installations / Outdoor installations
- Disadvantaged locations not reached by fixed networks
- Backup to the main network
- Totem, Vending Machine, ATM
- Digital Signage
- Video Surveillance
- Telecontrol and monitoring application

KEY BENEFITS

- ⇒ Always-on connection and service continuity
- ⇒ Security
- ⇒ Easy installation and factory pre-configuration
- ⇒ SIMs are installed and tested in factory on each device
- ⇒ Remote management and provisioning

DIGITAL DIVIDE & MOBILITY... WHEREVER YOU ARE...

Access

- It is possible to access the company data from any external location, even on the move (like agents, branch offices, temporary offices in fairs or construction sites.)
- It is possible to grant immediate access to the network without waiting for the activation of the fixed line
- In case of temporary or itinerant installations (fairs, events, events, seasonal services)
- The access to the network is instantaneous and does not require any special structures
- It's the ideal and optimized solution for unattended single workstations (like Kiosks) for payment services, advertising, information points, gaming.

Security

- Guaranteed secure VPN communication even on the public network. IPSec with 3DES - Data protection

Installation

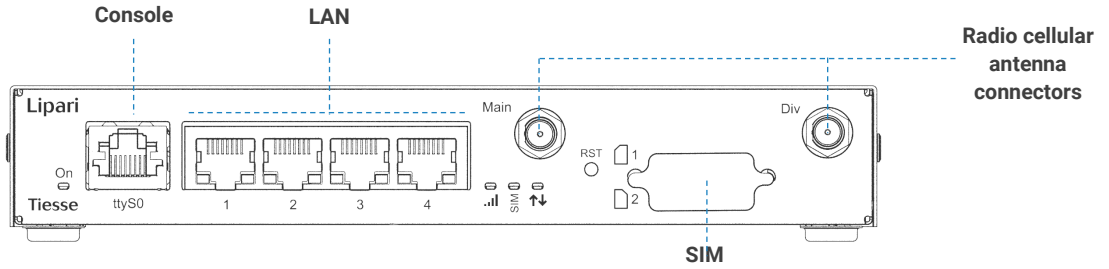
- Easy and immediate installation, possibility of ex-factory configuration

Performances

- Optimization of the use of the mobile radio channel to control traffic costs and improve transmission quality: asynchronous notifications, control messages, time inactivity, removable antenna to allow the use of high gain or outdoor antennas



HARDWARE INTERFACES



Ports	Type	Details
LAN	– FE	– 4 x Ethernet ports 10/100 Mbps; RJ45 connectors - with or without auto-negotiation, configurable
Radio Cellular	– LTE	<ul style="list-style-type: none"> – Frequency bands: LTE-FDD: B1/B3/B7/B8/B20/B28 – Throughput*: LTE-FDD: 150 Mbps (DL) - Max 50 Mbps (UL) (*) – Support up to CAT4 - Designed and prepared for category 6, available on request
	– UMTS	<ul style="list-style-type: none"> – Frequency bands: WCDMA: B1/B8 – Throughput*: DC-HSDPA: max 42 Mbps (DL) HSUPA: max 5.76 Mbps (UL) WCDMA: max 384 Kbps (DL) - max 384 Kbps (UL)
	– UMTS	<ul style="list-style-type: none"> – Frequency bands: B3/B8 – Throughput*: EDGE: max 296 Kbps (DL) - max 236.8 Kbps (UL) GPRS: max 107 Kbps (DL) - max 85.6 Kbps (UL)
	– SIM	<ul style="list-style-type: none"> – 2 x SIM Slots (Dual SIM mutual exclusive) – SIM connector type: push-push
Console	– RJ45	– 1 x RJ45 connector

* NOTE: Throughput value depends on network configuration, assigned bandwidth, number of users, and RF signal condition.

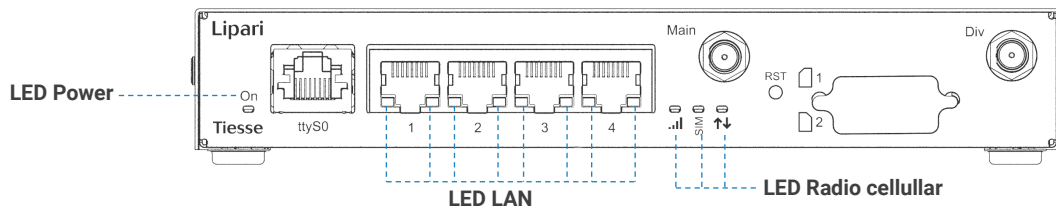


Front view with SIM slot protection opened and SIMs inserted



Front view - The SIM slot protection is closed

LED DESCRIPTION



LED	Color	Description
Power	Verde	– 1 x power / operative status
LAN	Verde/Giallo	– 2 x operative status - for each port
	Verde	– 1 x status/activity radio cellular connection
Radio cellulare	Verde	– 1 x reporting which SIM is in use (SIM1 vs SIM2)
	Verde	– 1 x IP address operative state (No IP, Obtaining it, Assigned)



SOFTWARE

Note: the list below is indicative; the features depend on the version and update NOS.

Area	Caratteristiche principali*
Networking	<ul style="list-style-type: none"> - TCP-UDP IPv4, IPv6, ARP
Layer 2 features	<ul style="list-style-type: none"> - LAN Bridging - VLAN over LAN 802.1q interface in Access mode, Trunk, native VLAN and Hybrid mode
Routing & Multicast	<ul style="list-style-type: none"> - Static - BGP-4, BGP-4+ - OSPFv2 - RIPv1, RIPv2 - Policy-based routing (PBR) - VRF Lite - Routing redistribution and tagging - VRRP (Virtual Routing Redundancy Protocol) with IPv4-IPv6 authentication - IGMP v1-v2-v3, IGMP snooping, IGMP proxying - Multicast routing with sparse-mode PIMv2 and PIMv2 dense-mode, MSDP - IEEE 802.1d (Spanning Tree Protocol)
Security	<ul style="list-style-type: none"> - NAT/PAT - ACLs, Stateful Firewall - SSL Tunnelling - L2TP - GRE Tunnelling with keep alive and key sequence numbering (cellular network optimization) - VPN with IPsec - 3 DES Encryption
Services	<ul style="list-style-type: none"> - DHCP client, DHCP Relay, DHCP server with anti-spoofing functions, DHCP Layer Discovery Protocol IEEE 802.1ab - Intelligent DNS Proxy, local and remote - Traceroute - Support of NTP Client and Server - Easy VPN - Dynamic DNS
Management and Configuration	<ul style="list-style-type: none"> - SNMP v1, SNMPv2, SNMPv3 - Telnet server with multiple simultaneous sessions - SSH server with multiple simultaneous (SSHv2) - IP SLA with support of: One Way Delay, Round Trip Delay, Jitter, Packet Loss - Fault management Syslog /Trap - RADIUS, TACACS+ - Tracking for backup management, commands and events scheduling - Software update via TFTP and FTP - Configuration via Command Line Interface (CLI), Text/Menu oriented and Telnet - Configuration via HTTP WEB GUI - Ability to maintain an arbitrary number of configurations

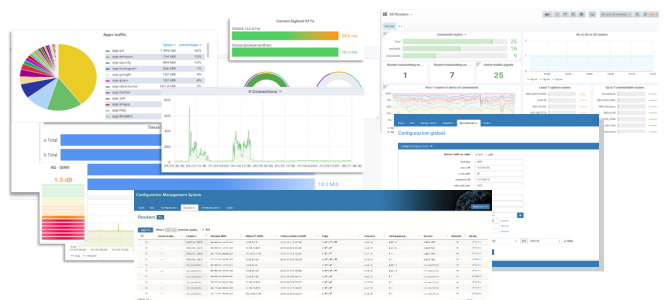
ZERO TOUCH PROVISIONING



Lipari 5200 routers are integrated into **TNA (Tiesse Network Architecture)** software suite.

TNA is the modular software suite that enables Zero Touch Provisioning network architecture, including remote and automated web-based monitoring and management of the configurations and firmware releases of the installed base machinery; it also enables traffic engineering, network overlays, and many other functionalities.

A complete datasheet of the solution is available on the www.tiesse.com website.





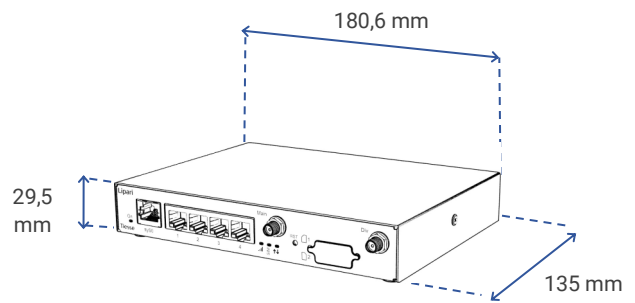
SYSTEM FEATURES

POWER	<ul style="list-style-type: none"> – AC Adapter Desktop 12V 2,5A RoHS3 , external power supply – 12-24 VDC (range 9-28)
CONSUMPTION	<ul style="list-style-type: none"> – < 3 W
ENVIRONMENT	<ul style="list-style-type: none"> – Operating temperature: –25° C / +70° C –40° C / +70° C - limit range – Storage temperature: –40° C / +70° C – Max operating humidity: 95% (non condensing)
PROTECTION GRADE	<ul style="list-style-type: none"> – IP40
PROCESSOR	<ul style="list-style-type: none"> – CortexA7- 528 MHz
MEMORY	<ul style="list-style-type: none"> – Default 128 MB (optional up to 512 MB)
FLASH MEMORY	<ul style="list-style-type: none"> – 256 MB or optional version on request: EMMC (8 GByte) with Linux Debian

EXTERNAL FEATURES

MATERIAL	<ul style="list-style-type: none"> – Metal chassis
COLOR	<ul style="list-style-type: none"> – black
FORM FACTOR	<ul style="list-style-type: none"> – On horizontal plane – 1U rack (optional rack mounting kit)
ANTENNAS	<ul style="list-style-type: none"> – Radio cellular 2 x 4G external removable antennas, SMA male connector

SIZE



Add-ons

The Lipari 5200 models are equipped with optional accessories such as omni-directional and outdoor antennas, or supports for additional mounting options.

Please refer to the documentation specification for all supported accessories, available on www.tiesse.com.

Technical support

On line support via:

Supporto.tiesse.com: the site with technical documentation, assembly instructions, software updates, and how to request technical support.

Wiki.tiesse.com: the site with manuals, instructions for installation, case studies, scenarios, FAQs, etc.



Tiesse

Innovation made in Italy®

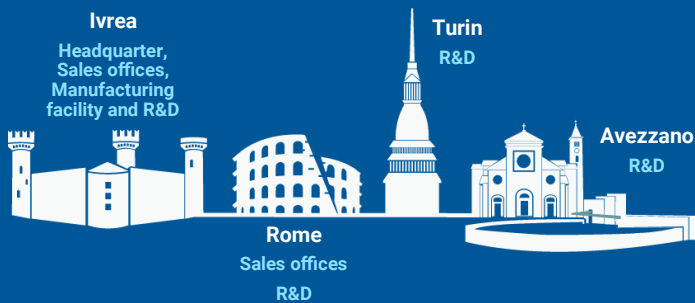
Tiesse is a **totally Italian company** which has more than 20 years of expertise in designing, developing, and manufacturing both M2M/IoT and network devices. The **IMOLA, LIPARI** and **LEVANTO** product series are innovative, competitive and certified; they are present in the largest distributed national networks (from gas stations to large retailers, insurance companies and banks) as well as in the largest networks of the main gaming operators and energy sector.



Info: mail@tiesse.com

Marketing & Sales: marketing@tiesse.com

www.tiesse.com



Via Asti 4
10015 Ivrea (TO)
Italy

Viale L. Gaurico 9/11
00143 Roma EUR
Italy

Via Livorno 60
10144 Torino (TO)
Italy

Tel +39.0125230544
Fax +39.0125631923

Tel +39.0654832203
Fax +39.0654834000

Via C. Corradini 80
67051 Avezzano (AQ)
Italy



© Copyright Tiesse S.p.A.

Any disclosure, derivation or reproduction of this document, even partial, is strictly prohibited without prior written authorization by Tiesse S.p.A.

Disclaimer

The informations in this document may contain predictive statements including, without limitation, statements regarding the future financial and operating results, future product portfolio, new technology, etc. There are a number of factors that could cause actual results and developments to differ materially from those expressed or implied in the predictive statements. Therefore, such information is provided for reference purpose only and constitutes neither an offer nor an acceptance. Tiesse may change the informations at any time without notice.

Ver. ENG 050624

