



Imola LX

0272-IKW-V



Imola LX 0272-IKW-V



Router ultrabroadband VDSL2 e Wi-Fi

The **Imola LX 0272-IKW-V** series routers are part of the evolution of the IMOLA line, which are certified routers used in the networks of the main telecommunications operators.

Thanks to the ADSL2 / VDSL2 and WAN Giga Ethernet connectivity, they are particularly suitable for business applications where security, service continuity and network performance are of primary importance.

FEATURES

- ⇒ Routing
- ⇒ Switching
- ⇒ Multi fail-over
- ⇒ QoS

KEY BENEFITS

- ⇒ Security
- ⇒ Scalability
- ⇒ Easy installation and factory pre-configuration
- ⇒ Zero touch provisioning

APPLICATIONS

- ⇒ Enterprise WAN network secure access
- ⇒ Branches and remote offices of Banks and Insurance companies
- ⇒ Lottery
- ⇒ Gaming networks
- ⇒ Transport
- ⇒ Backup for broadband networks



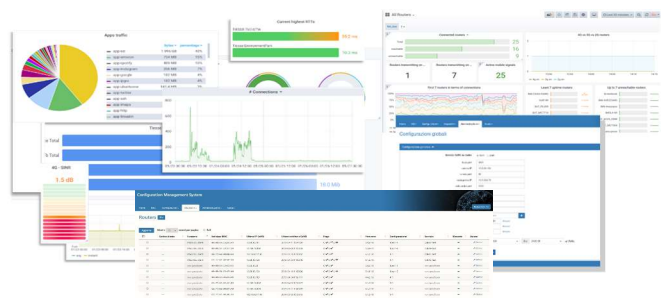
ZERO TOUCH PROVISIONING



Imola LX 0272-IKF routers are integrated into the **Tiesse Network Architecture (TNA) suite**.

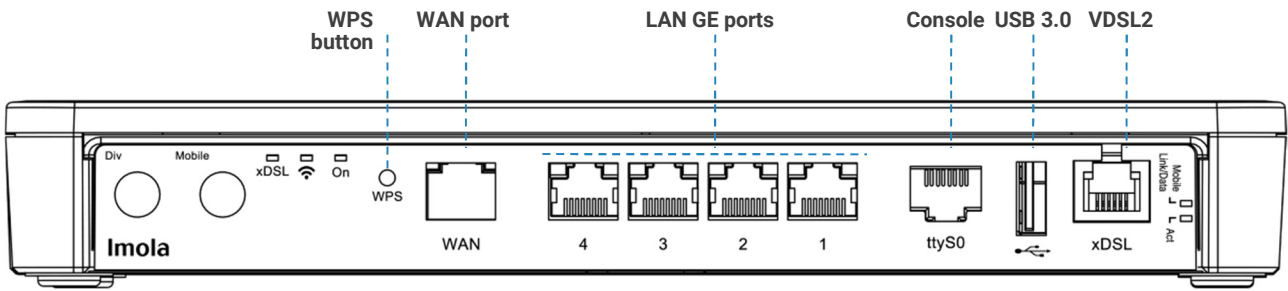
TNA is the modular software suite that enables Zero Touch Provisioning network architecture, including monitoring, remote and automated web-based management of configurations and firmware releases of the installed fleet; enables traffic engineering, network overlays, and many other features.

A complete datasheet of the solution is available at www.tiesse.com.





INTERFACCE HARDWARE



Port	Description	Details
LAN	– GE	– 4 ports 10/100/1000 Mbps, RJ45 connector
	– Wi-Fi	– 1 port 802.11 b/g/n port (2.4 GHz) 2x2
WAN	– GE	– 1 port 10/100/1000 Mbps, RJ-45 connector (label WAN)
	– ADSL 2/2+	1 port with RJ11 connector, Full rate ADSL2/2+ / VDSL2
	– VDSL2	ADSL2/2+ <ul style="list-style-type: none"> – Downstream data rate up to 24 Mbps – Upstream data rate up to 3.5 Mbp – Standards-compliant G.992.1 annex A,B,C&I, G.992.2-g.Lite, G.992.3 annex A, B, I, J, M, G.992.4-g.Lite.bis, G.992.5 annex A, B, C, I, J, M, ANSI T1.413 issue2, ETSI TS 388 VDSL2 <ul style="list-style-type: none"> – Support for all VDSL2 profiles: 8 MHz to 30 MHz ITU-T G993.2 – G.Vector standard-compliant (ITU-T G.993.5) – ITU-T G.998.4 G.INP standard-compliant – ADSL2 compatible (backward compatibility)
CONSOLE	– RJ45	– 1 port with RJ45 connector
USB		– 1 port USB 3.0

VDSL2 - New Generation network



Support of the new generation networks (NGN), ensuring:

- Support for VDSL2 profiles: 8 MHz to 30 MHz ITU-T G993.2
- G.Vector standard conformity (ITU-T G.993.5)
- ITU-T G.998.4 G.INP standard conformity (impulse noise protection)
- ADSL2 compatible (backward compatibility)

LEDS DESCRIPTION

LED	Color	Position	Description
Power	Green	– Led area 1	– 1 x power / operative statur
	Green	– Led area 1	– 1 x operative statur
Wi-Fi	Green	– Led area 2	– 1 x authentication status (Act)
	Verde	– Led area 1	– 1 x operative statur
xDSL	Verde	– Led area 1	– 1 x operative statur
LAN	Yellow / Green	–	– 2 x each port, for operative statur

* NOTE: The use of LEDs depends on the active functionality of each specific model. The figure above highlights the LEDs used in the model covered by this datasheet.



SOFTWARE

* Nota: le funzionalità software dipendono dalla versione e dal livello di aggiornamento del firmware del prodotto.

Area	Caratteristiche principali	
NETWORKING	<ul style="list-style-type: none"> - TCP-UDP IPv4 	<ul style="list-style-type: none"> - IPv6
LAYER 2 FEATURES	<ul style="list-style-type: none"> - LAN Bridging - VLAN support on LAN interface 802.1q in Access mode, Trunk, native VLAN and Hybrid mode 	<ul style="list-style-type: none"> - Layer 2 Protocol Tunneling (L2PT) - 802.1Q-in-802-1Q
ROUTING & MULTICAST	<ul style="list-style-type: none"> - Static, Policy routing, RIPv1, RIPv2 - BGP-4, BGP-4+ - OSPFv2 - VRF Lite, Routing redistribution and tagging - VRRP (Virtual Routing Redundancy Protocol) with IPv4-IPv6 authentication 	<ul style="list-style-type: none"> - IGMP v1-v2-v3, IGMP snooping, IGMP proxying - Multicast routing with PIMv2 sparse-mode and PIMv2 dense-mode, MSDP - IEEE 802.1d (Spanning Tree Protocol)
QOS	<ul style="list-style-type: none"> - Traffic classification based upon source IP, based on a combination of source IP, destination IP, protocol (UDP, ICMP, TCP, etc), upon DSCP/IP precedence, ToS or Port - DiffServ - CoS on VLAN - QoS on classi ATM 	<ul style="list-style-type: none"> - Shaping with guaranteed allocated bandwidth and redistribution of bandwidth excess - Committed Access Rate e Multicast rate Limit - Mechanisms of traffic prioritization, ability to define an arbitrary number of priority classes - IEEE 802.3ad link aggregation
SECURITY	<ul style="list-style-type: none"> - NAT/PAT - ACLs, Stateful Firewall - SSL Tunneling - L2TP 	<ul style="list-style-type: none"> - GRE Tunneling with keep alive and key sequence numbering (radio mobile network optimization) - VPN con IPSEC/ESP o IPSEC/AH IKEv1/IKEv2 - 3 DES Encryption
SERVICES	<ul style="list-style-type: none"> - DHCP client, DHCP server with anti-spoofing functions, DHCP Layer Discovery Protocol IEEE 802.1ab, DHCP relay - Intelligent DNS Proxy, both local and remote - Traceroute 	<ul style="list-style-type: none"> - NTP Client and Server support - Easy VPN - DDns
MANAGEMENT AND CONFIGURATION	<ul style="list-style-type: none"> - SNMP v1, SNMPv2, SNMPv3 - Telnet server with multiple simultaneous sessions - SSH server with multiple simultaneous sessions (SSHv2) - Netflow - IP SLA support for: One Way Delay, Round Trip Delay, Jitter, Packet Loss - SAA (Service Assurance Agent) - Fault management Syslog /Trap 	<ul style="list-style-type: none"> - Radius Support, TACACS+ - Tracking for backup management, commands and events scheduled - Software update via TFTP, FTP, HTTP, HTTPS, SCP - Configuration via Command Line Interface (CLI), Text/Menu oriented and Telnet - TNA (Tiesse Network Architecture) suite per auto-provisioning e gestione automatizzata remota - Possibility to keep an arbitrary number of configuration

ONE ROUTER, THREE POSITIONING OPTIONS



On a horizontal surface, such as your desktop, for example



Vertical positioning, using its bracket



Wall mounting, using the same bracket of the vertical positioning



SYSTEM FEATURES

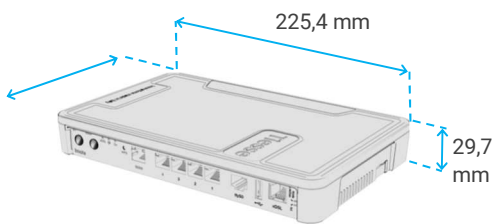
POWER	<ul style="list-style-type: none"> – 12V AC/DC Adapter – ON/OFF button
CONSUMPTION	– < 20 W Full Configuration
FANS	– Fanless
PROCESSOR	– RISC Network processor
MEMORY	<ul style="list-style-type: none"> – RAM: 256 MB - DDR3 – FLASH: 256 MB
ENVIRONMENT	<ul style="list-style-type: none"> – Operating temperature: -5°C / +50° C – Storage temperature: -40°C / +70°C – Maximum relative operating humidity: 93% (non-condensing)

EXTERNAL FEATURES	
MATERIAL	– Plastic chassis
COLOR	– Black
FORM FACTOR	– Desktop

SIZE

Desktop / plane

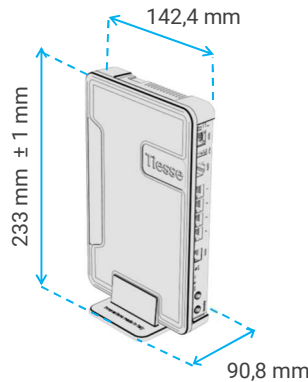
On horizontal surface, without bracket.



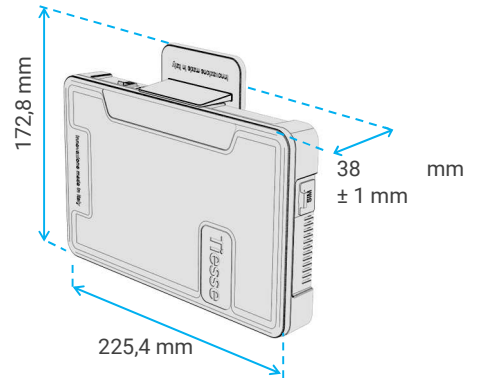
STANDARD WEIGHT

500 gr ± 10%

Desktop vertical mounting with bracket



Wall mounting with bracket

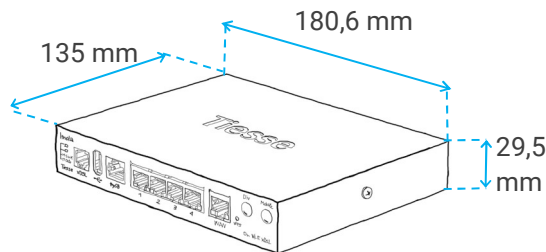


METALLIC CHASSIS VARIANT

Metal chassis variant available (for mass production or industrial projects) with extended operating temperature range (-25°/+70°).

STANDARD WEIGHT

660 gr ± 30



TECHNICAL SUPPORT

On line support on:



Supporto.tiesse.com: portal with technical documentation, installation instructions, software updates, and ways to request technical support.

Wiki.tiesse.com: site dedicated to software documentation; includes user manuals, first-time user guides, case studies, tutorials, and other useful resources for using the products.



Tiesse

Innovation made in Italy®

Tiesse is a totally Italian company with more than 25 years of experience in the design, development and production of network equipment and IoT devices, suitable for use in mission-critical and industrial scenarios. Tiesse's most successful series, Imola, Lipari and Levanto, are innovative, competitive and certified, and are present in the networks of the major telecommunications operators, in the energy sector, large-scale distribution and vertical sectors, both in the Italian and foreign markets.

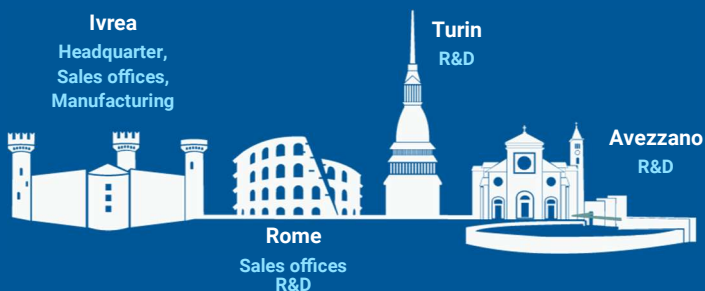
Further information on Tiesse solutions can be found on the company website www.tiesse.com.



Info: mail@tiesse.com

Marketing & Sales: marketing@tiesse.com

www.tiesse.com



Via Asti 4
10015 Ivrea (TO)

Viale L. Gaurico 9/11
00143 Roma EUR

Via Livorno 60
10144 Torino (TO)

Tel +39.0125230544
Fax +39.0125631923

Tel +39.0654832203
Fax +39.0654834000

Via C. Corradini 80
67051 Avezzano (AQ)

© Copyright Tiesse S.p.A.

Any disclosure, derivation or reproduction of this document, even partial, is strictly prohibited without prior written authorization by Tiesse S.p.A.

Disclaimer

The informations in this document may contain predictive statements including, without limitation, statements regarding the future financial and operating results, future product portfolio, new technology, etc. There are a number of factors that could cause actual results and developments to differ materially from those expressed or implied in the predictive statements. Therefore, such information is provided for reference purpose only and constitutes neither an offer nor an acceptance. Tiesse may change the informations at any time without notice.

Ver. ENG 141124

